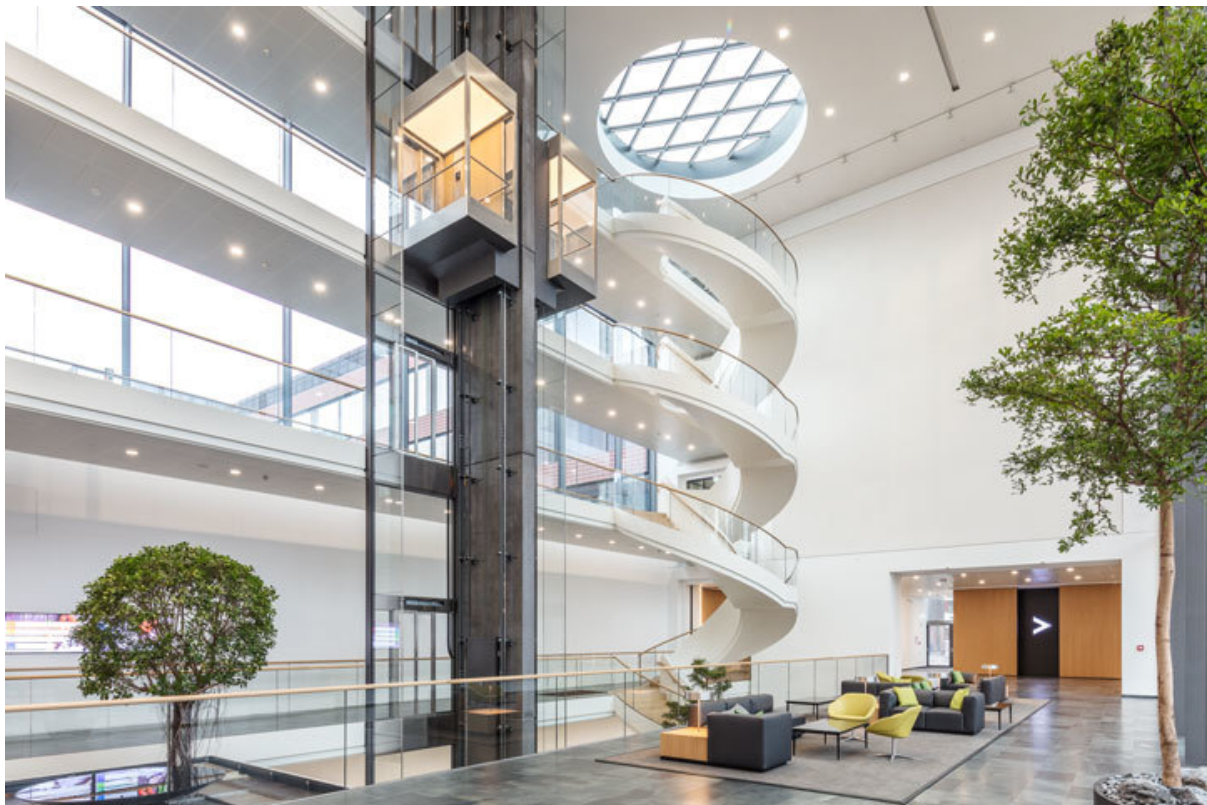


Product data sheet

Slimdrive SCR GGS *



Automatic curved sliding door system for constructing all-glass solutions

**AREAS OF APPLICATION**

- 2- and 4-leaf all-glass door systems
- Interior and exterior doors with high access frequency
- Representative building entrances with large incidence of light
- Façades with slim mullion-transom constructions
- Glass façades with the highest design standards
- Opening widths of 800 to 2300 mm possible
- Door leaf weights up to maximally 100 kg

PRODUCT FEATURES

- Very quiet running, low-wear direct current drive with a height of only 7 cm
- The system consists of two drives that are controlled separately from one another.
- High-quality stainless steel fittings open up a wide range of applications
- Moving leaves are frameless and are attached to the roller carriage by means of two single point fixings.
- The floor guide is attached to the glass with single point fixings.
- 40 % more opening width than with linear sliding door drives
- Wide range of drive variants and equipment options possible
- Can be networked, and integrated into the building automation via open standard (BACnet)
- Independent error recognition and recording
- Freely configurable inputs and outputs for different functions
- Integrated, rechargeable battery for emergency opening in case of safety-relevant faults, such as power failure
- Self-cleaning roller carriage reduces maintenance effort and costs
- Various mechanical and electrical locks are optionally available

TECHNICAL DATA

| | |
|--|---------------------|
| Productname | Slimdrive SCR GGS * |
| Barrier-free | Yes |
| Adjustable opening speed (ventilation) | Yes |
| Adjustable closing speed | Yes |
| Opening width 2-leaf | 800 mm – 2300 mm |
| Clear passage height | 2500 mm |
| Canopy height (min.) | 75 mm |
| Leaf weight (max.) 1-leaf | 120 kg |
| Leaf weight (max.) 2-leaf | 120 kg |

| | |
|------------------------------|--|
| Radius (min.) | 1250 mm |
| Radius (max.) | 2000 mm |
| Moving leaf version | 10 mm ESG-H with GGS fitting system (GGS variant), Special glass on request |
| Side elements version | 10 mm LSG, Special glass on request |
| Surface | Powder-coated according to RAL, Anodised light alloy E6/EV1, colour anodised according to sample, Coated with polished stainless steel, coated with grit 240 stainless steel, special coating on request |
| Version of roof structure | optical sheet metal covering, Glass roof |
| Illumination | not possible with glass roof |
| Floor covering | Entrance mat, Entrance mat according to customer wishes |
| Hot-air curtain system | possible, depends on the ceiling construction |
| Off-centre façade connection | Yes |
| Special functions on request | Yes |
| Operation | Programme switch DPS, Programme switch TPS, Control via building management system |
| Standard conformity | DIN 18650, EN 16005 |

ACCESSORIES

GC 307+ *

Non-contact proximity switch for activating automatic doors



| Designation | Description | Ident-No. | Colour | Dimensions | Type of installation |
|-----------------------|---|-----------|--------------|-----------------|------------------------------|
| GC 307+ (hand icon) * | automatic doors | 195727 | alpine white | 80 x 80 x 21 mm | Surface-mounted installation |
| GC 307+ (WC icon) * | automatic doors / Suitable for Powerturn, EMD, and standard sliding doors | 195751 | alpine white | 80 x 80 x 21 mm | Surface-mounted installation |
| GC 307+ (hand icon) * | automatic doors | 193226 | alpine white | 80 x 80 x 8 mm | Flush-mounted installation |
| GC 307+ (WC icon) * | automatic doors / Suitable for Powerturn, EMD, and standard sliding doors | 195750 | alpine white | 80 x 80 x 8 mm | Flush-mounted installation |

INTERLOCKING DOOR SYSTEM FUNCTION *

Prevents simultaneous opening of two doors that are installed in a row



| Designation | Ident-No. | Dimensions | Type of installation |
|-------------------------------------|-----------|-------------------|--|
| Interlocking door system function * | 109072 | 192 x 164 x 87 mm | Surface-mounted installation, Flush-mounted installation |

AIR 30 *

Active infrared light switch for side panel protection of automatic curved sliding doors



SW MINI-BUTTON *

Can be used in the retail sector for one-time opening of automatic doors to leave the building in night mode



| Designation | Ident-No. | Colour | Dimensions | Type of installation |
|------------------|-----------|--------|----------------------|----------------------------|
| SW mini-button * | 098861 | black | 20 x 20 x 11 x 22 mm | Flush-mounted installation |

DIGITAL PROGRAMMABLE TIMER *

For time-controlled changes of modes of operation on automatic doors



E2 ROCKER PUSH BUTTON

Activation of all GEZE automatic doors



| Designation | Ident-No. | Colour | Dimensions | Type of installation |
|-----------------------|-----------|-----------------|----------------------|----------------------------|
| E2 rocker push button | 094013 | pure white matt | 80.8 x 80.8 x 9.3 mm | Flush-mounted installation |

LS 990 ROCKER PUSH BUTTON

Activation of all GEZE automatic doors



| Designation | Ident-No. | Colour | Dimensions | Type of installation |
|---------------------------|-----------|-----------------|-----------------|----------------------------|
| LS 990 rocker push button | 098396 | Stainless steel | 81 x 81 x 11 mm | Flush-mounted installation |

SERVICE INTERFACE

Faster diagnosis and maintenance



| Designation | Description | Ident-No. |
|-------------------------|--|-----------|
| Service interface EC T2 | to be mounted onto cover of sliding doors. Allows the connection of Service Terminal or Bluetooth Interface.Connector cable length: 3 meters | 181028 |

* The products designated above may vary in form, type, characteristics, function, or availability depending on the country. Please get in touch with your GEZE contact person if you have any questions.