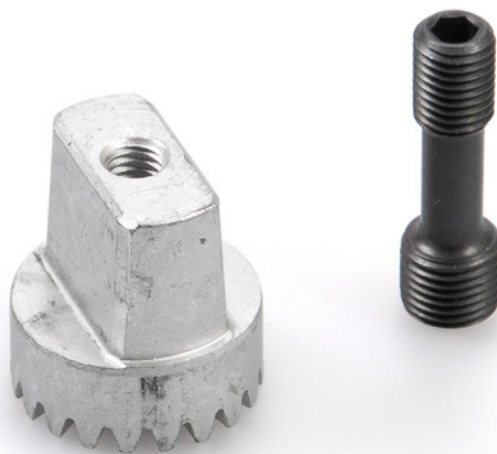


# Product data sheet

# Spindle cap floor spring



With flat cone, including clamping-extension bolt

## AREAS OF APPLICATION

→ Single- and double-action doors

# Spindle cap floor spring



## PRODUCT FEATURES

→ With flat cone

## TECHNICAL DATA

|                                    |                          |
|------------------------------------|--------------------------|
| Productname                        | Spindle cap floor spring |
| Hold-open of fire protection doors | No                       |

## VARIANTS / ORDER INFO

| Designation                       | Description                                       | Ident-No. | Spindle extension |
|-----------------------------------|---|-----------|-------------------|
| GEZE spindle cap for floor spring | With flat cone, including clamping-extension bolt | 010337    | 5 mm              |
| GEZE spindle cap for floor spring | With flat cone, including clamping-extension bolt | 010385    | 50 mm             |
| GEZE spindle cap for floor spring | With flat cone, including clamping-extension bolt | 010373    | 25 mm             |
| GEZE spindle cap for floor spring | With flat cone, including clamping-extension bolt | 010378    | 40 mm             |
| GEZE spindle cap for floor spring | With flat cone, including clamping-extension bolt | 010377    | 35 mm             |
| GEZE spindle cap for floor spring | With flat cone, including clamping-extension bolt | 052170    | 13 mm             |
| GEZE spindle cap for floor spring | With flat cone, including clamping-extension bolt | 050644    | 0 mm              |
| GEZE spindle cap for floor spring | With flat cone, including clamping-extension bolt | 010372    | 20 mm             |
| GEZE spindle cap for floor spring | With flat cone, including clamping-extension bolt | 010347    | 15 mm             |
| GEZE spindle cap for floor spring | With flat cone, including clamping-extension bolt | 050930    | 8 mm              |
| GEZE spindle cap for floor spring | With flat cone, including clamping-extension bolt | 050931    | 28 mm             |
| GEZE spindle cap for floor spring | With flat cone, including clamping-extension bolt | 010381    | 45 mm             |
| GEZE spindle cap for floor spring | With flat cone, including clamping-extension bolt | 010338    | 10 mm             |
| GEZE spindle cap for floor spring | With flat cone, including clamping-extension bolt | 010374    | 30 mm             |